

SUFFOLK COUNTY COMMUNITY COLLEGE

2017-2018 ACADEMIC YEAR

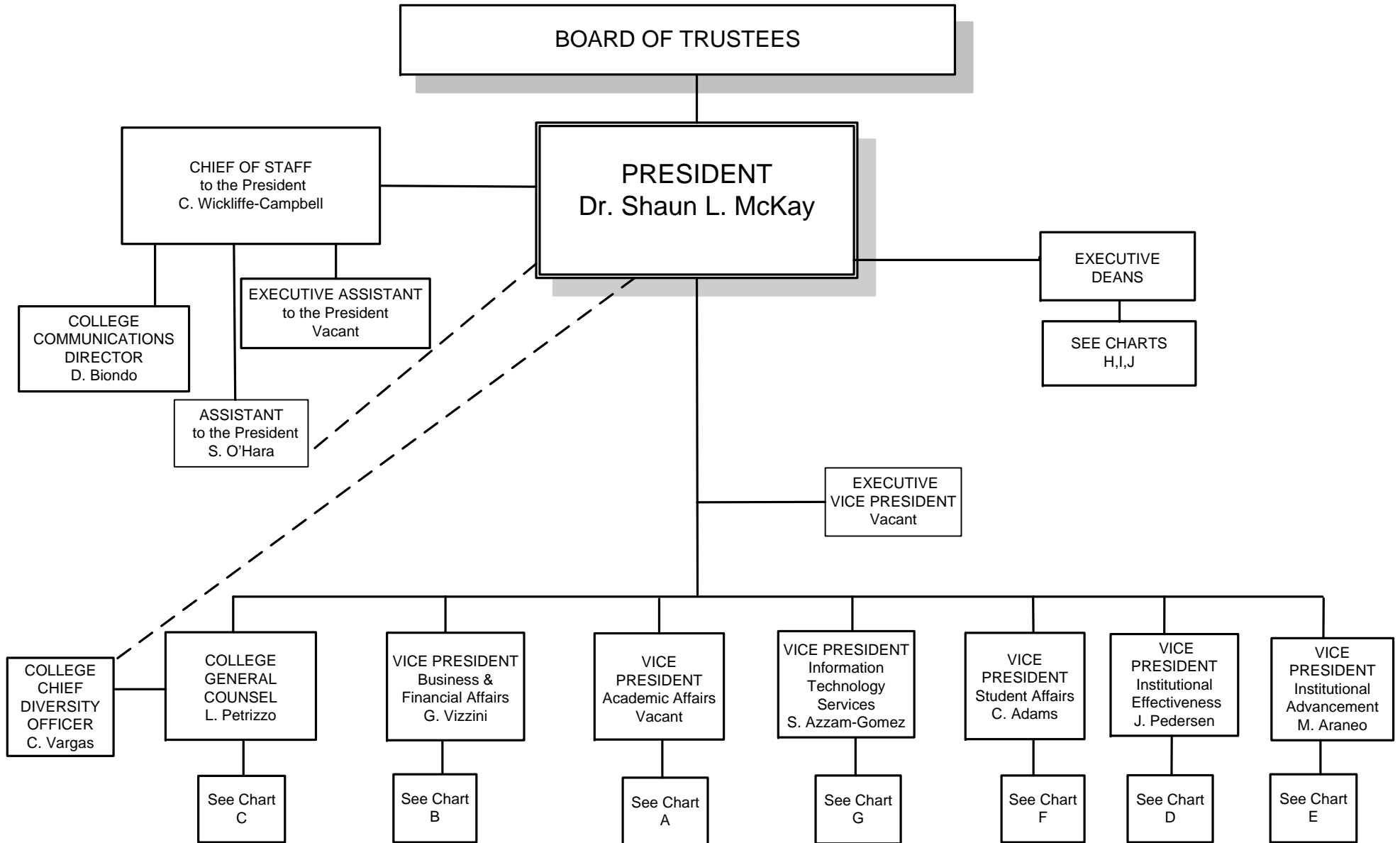


Chart A

ACADEMIC AFFAIRS

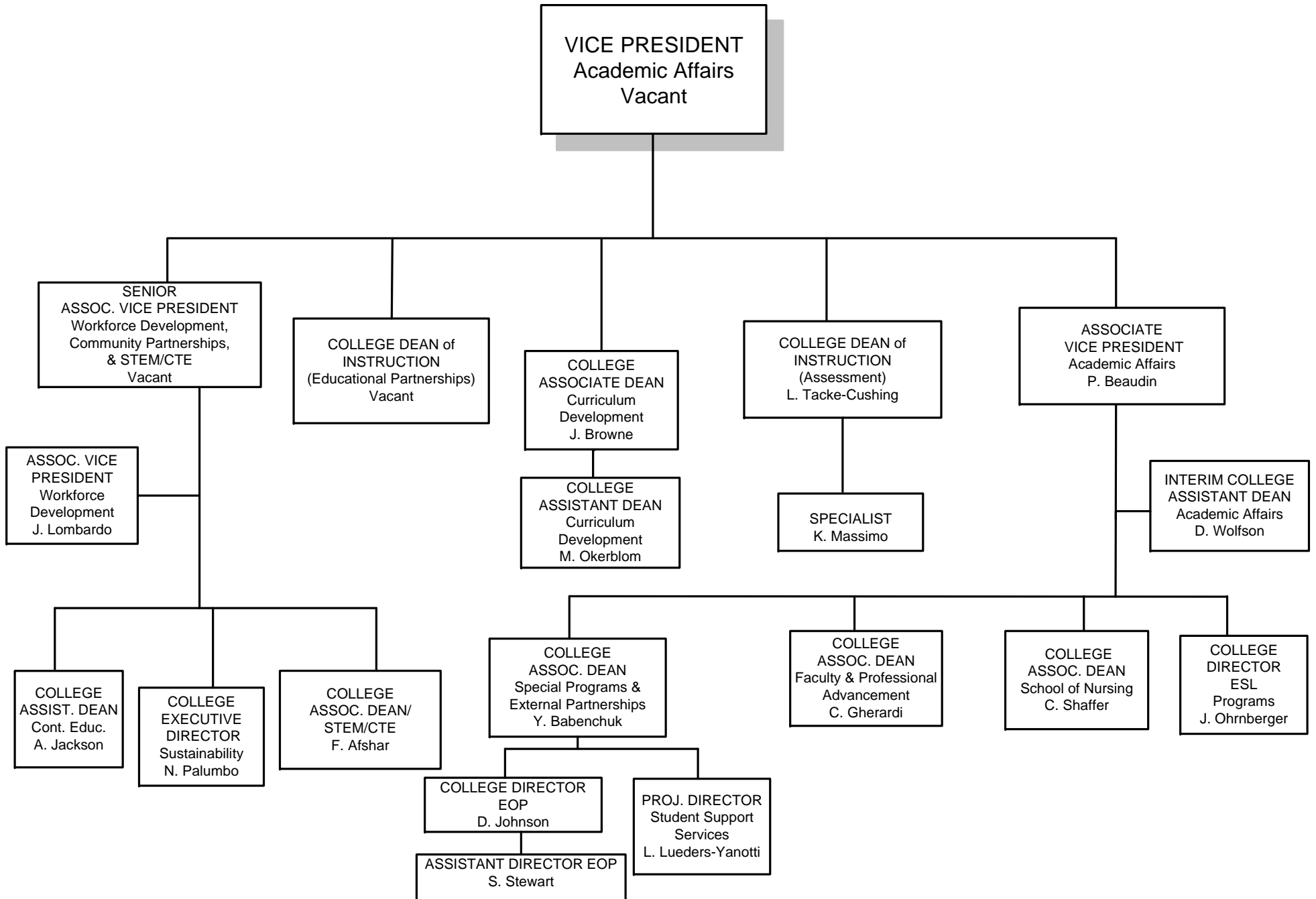


Chart B

BUSINESS & FINANCIAL AFFAIRS

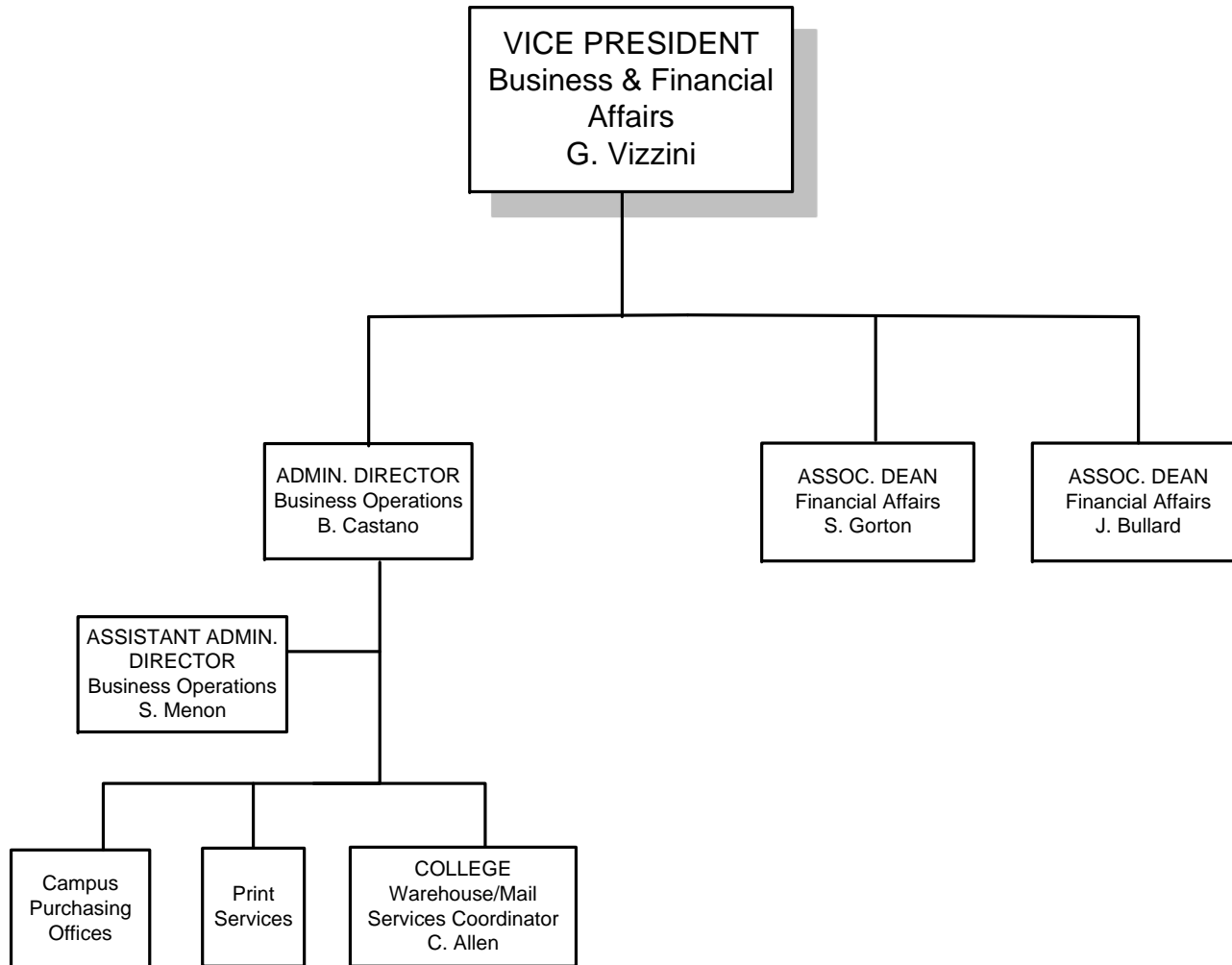


Chart C

LEGAL AFFAIRS

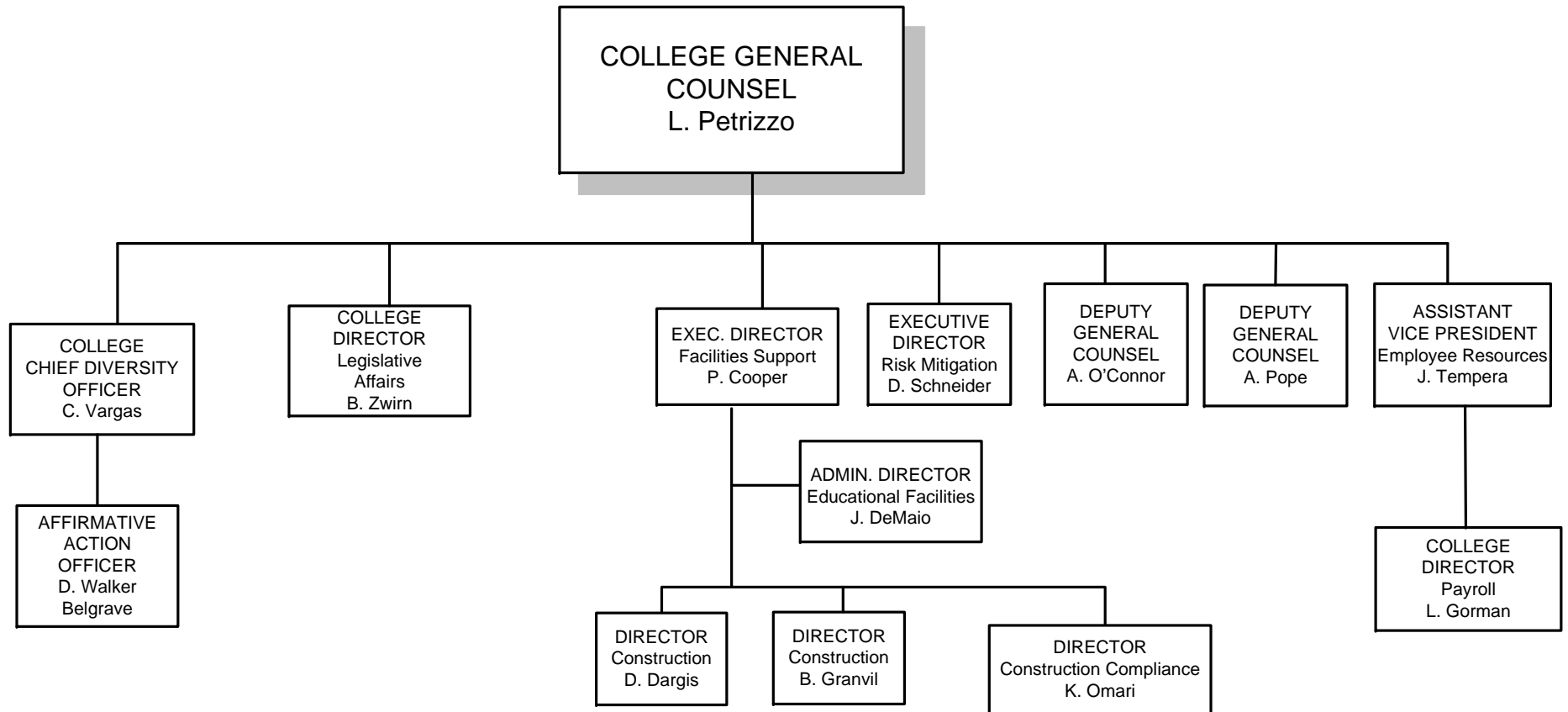
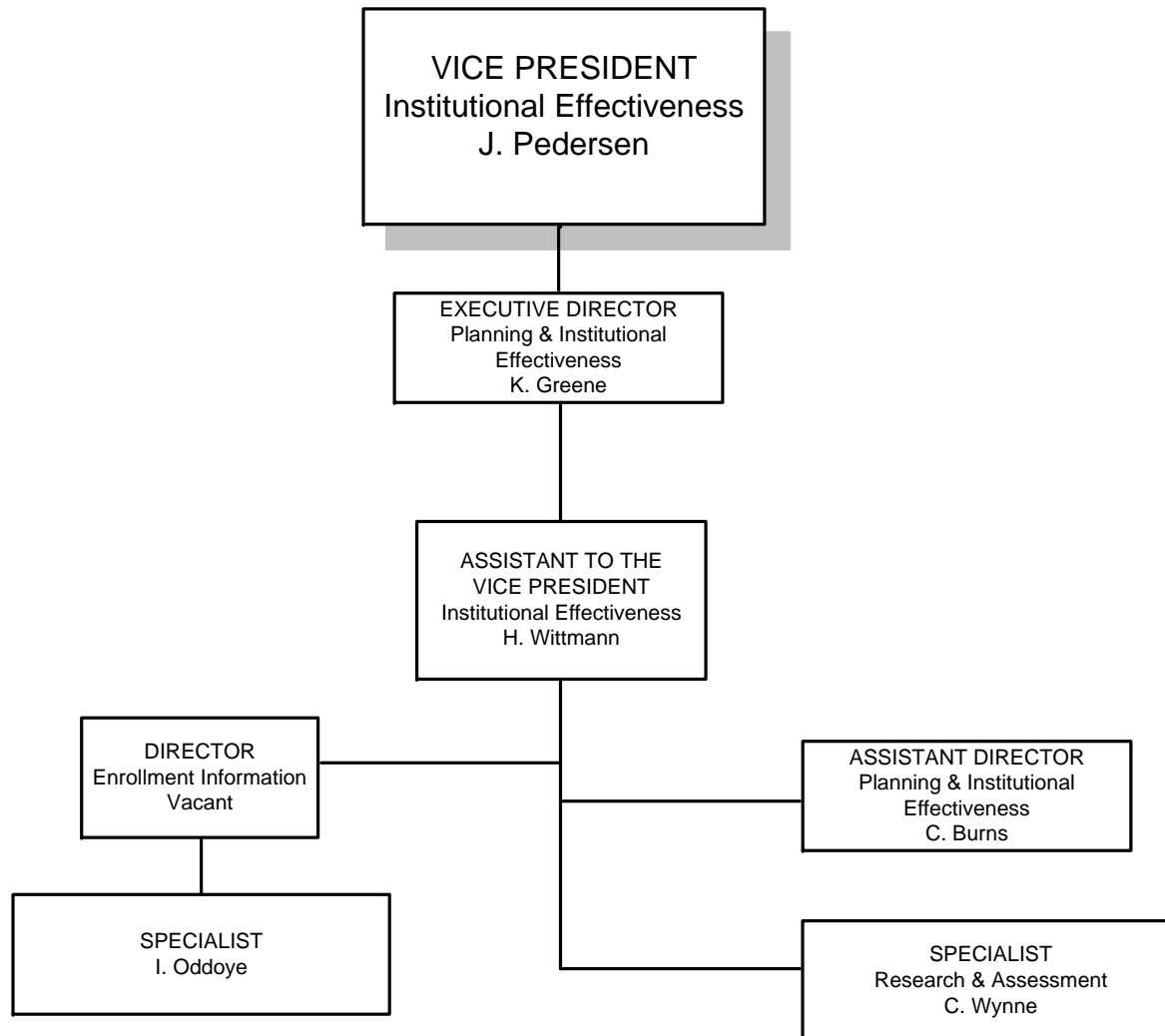
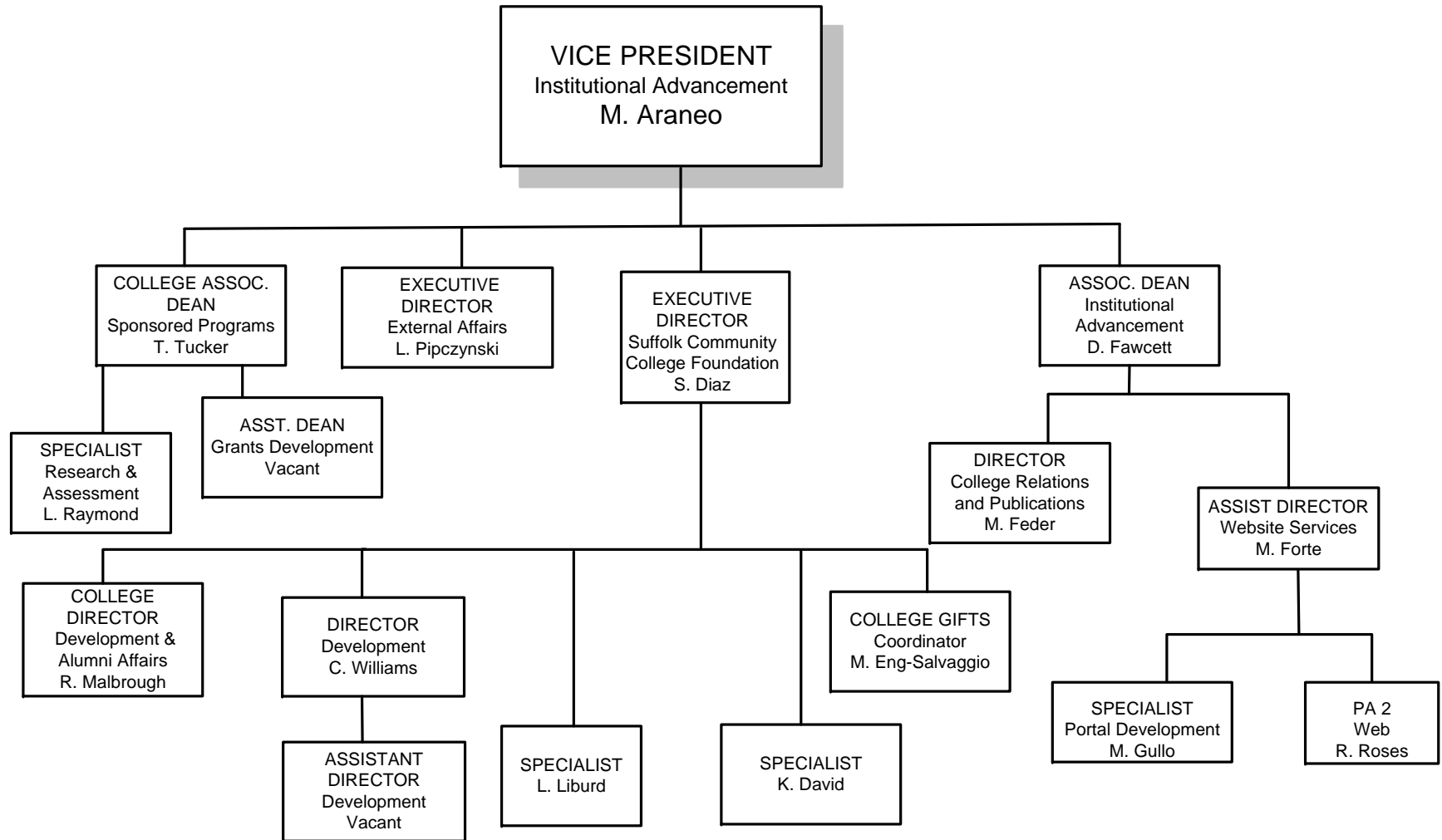


Chart D

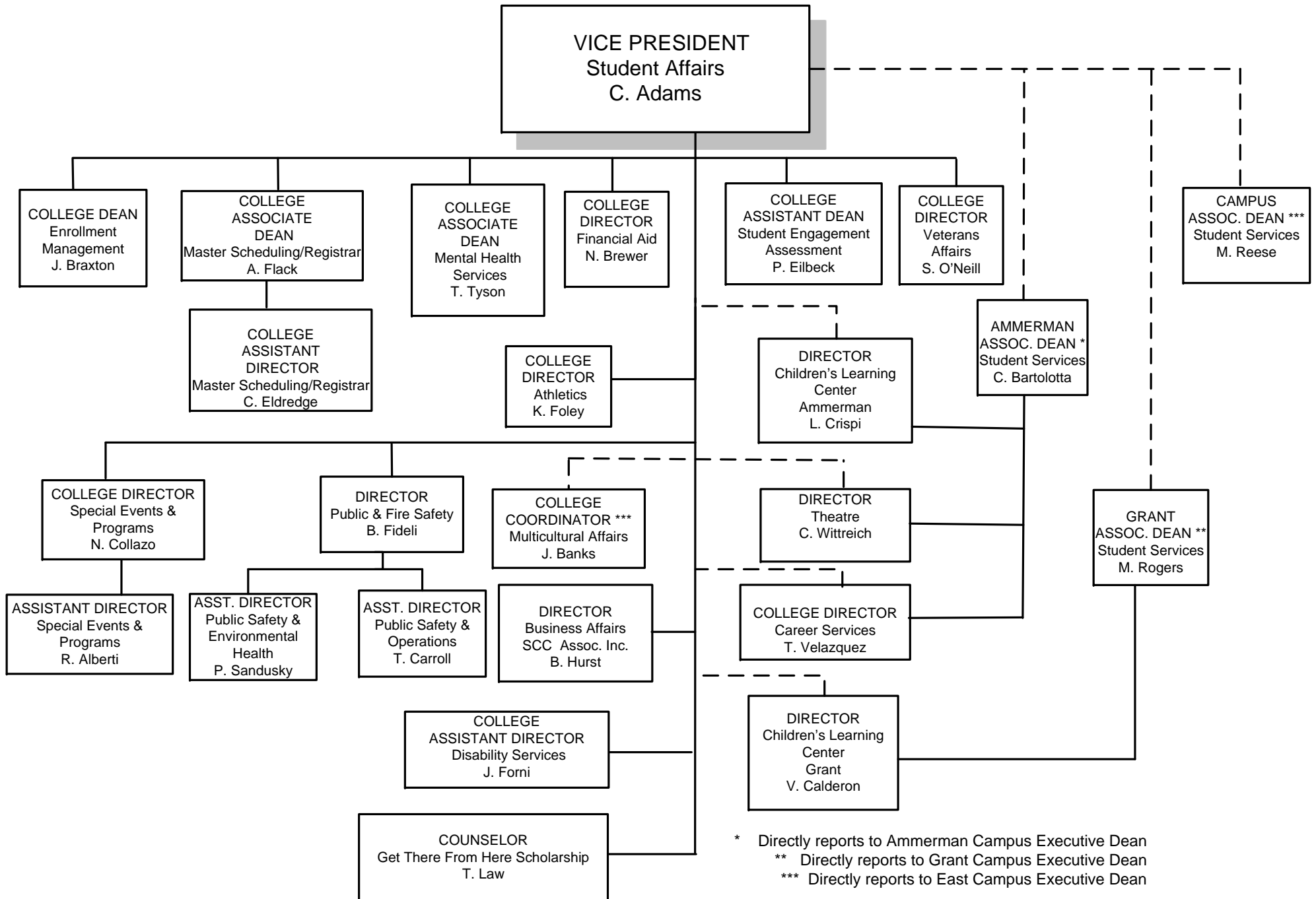
PLANNING AND INSTITUTIONAL EFFECTIVENESS



INSTITUTIONAL ADVANCEMENT



STUDENT AFFAIRS



* Directly reports to Ammerman Campus Executive Dean
 ** Directly reports to Grant Campus Executive Dean
 *** Directly reports to East Campus Executive Dean

Chart G

INFORMATION TECHNOLOGY SERVICES

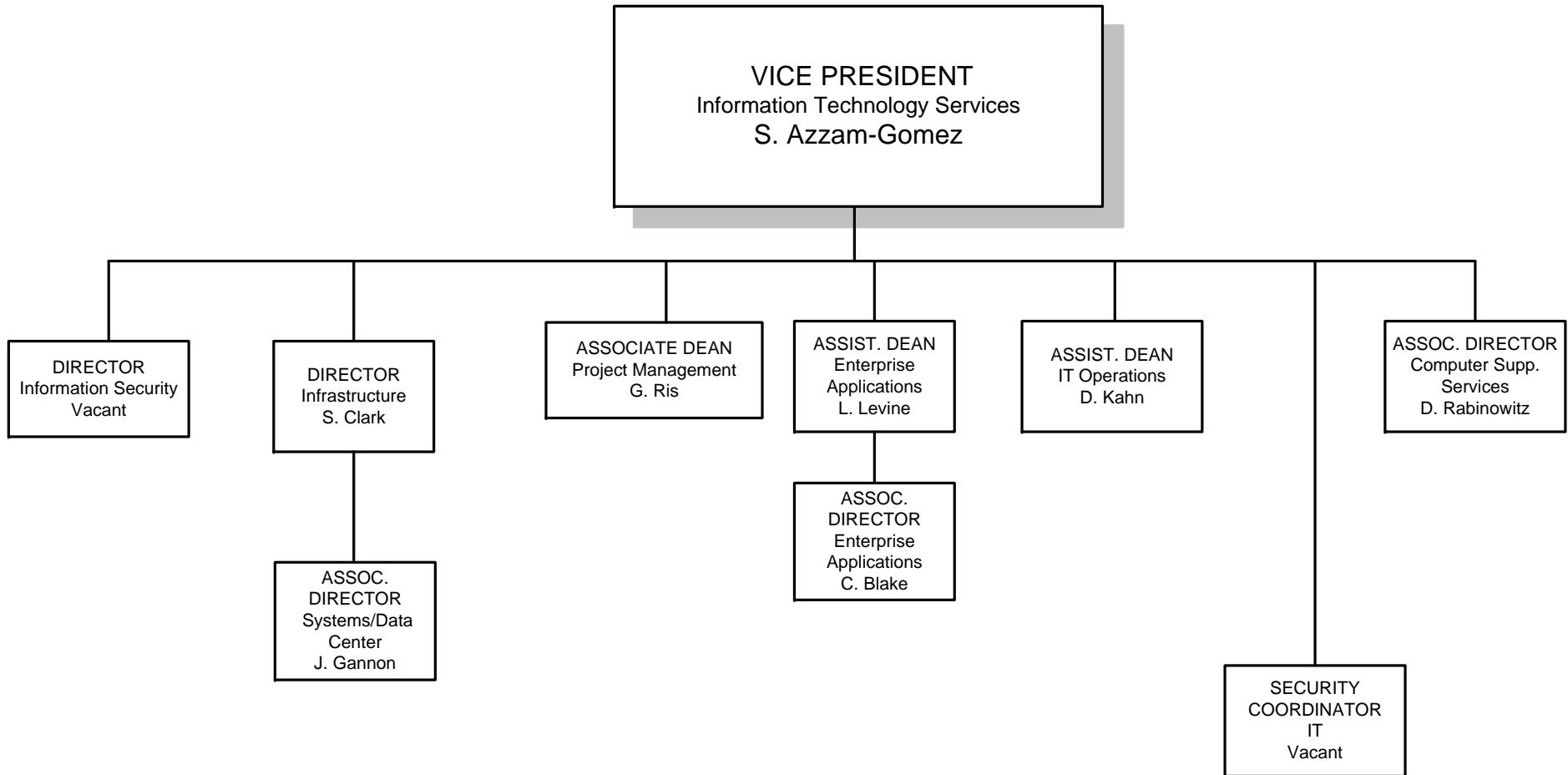
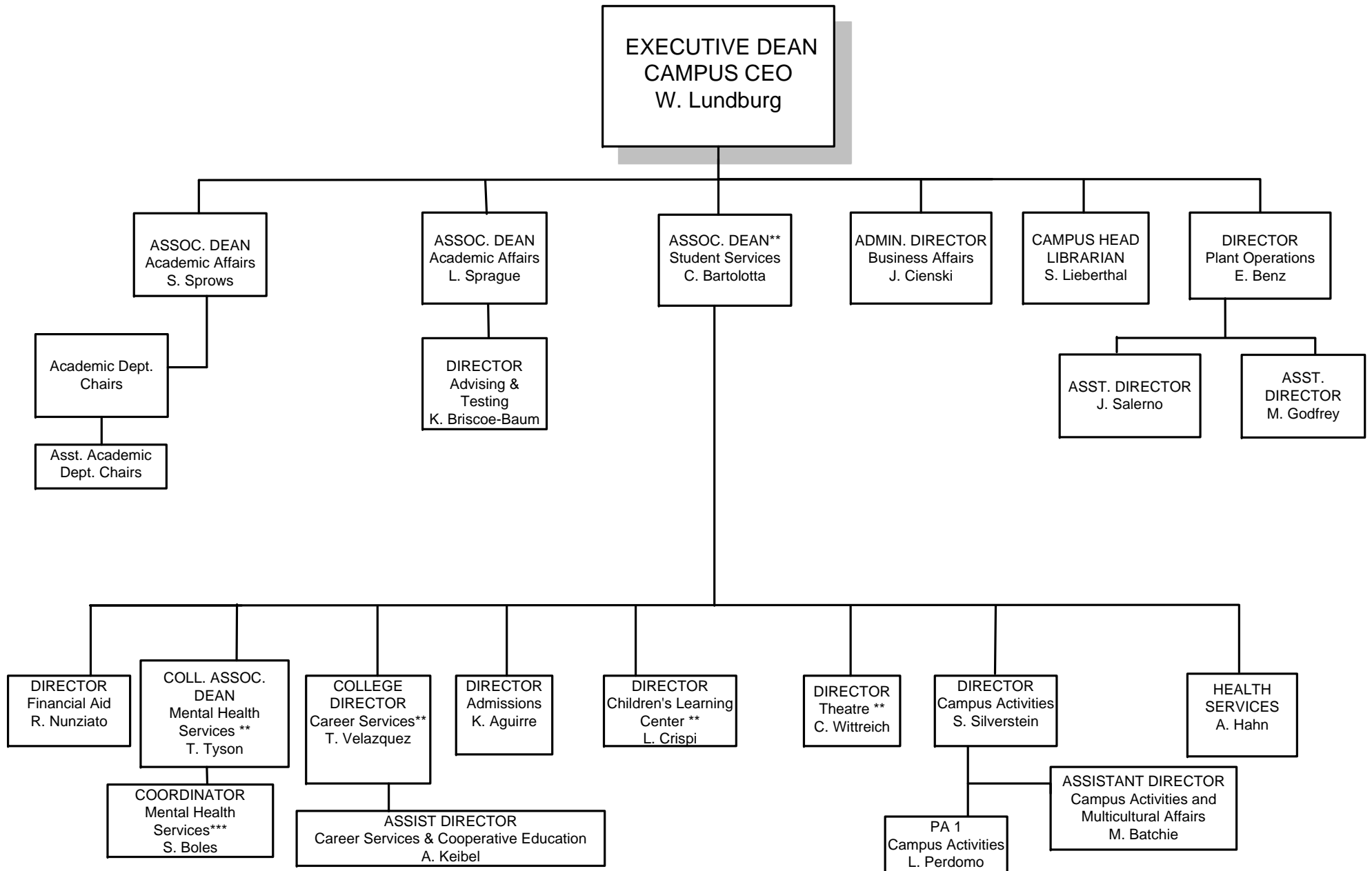


Chart H

AMMERMAN CAMPUS

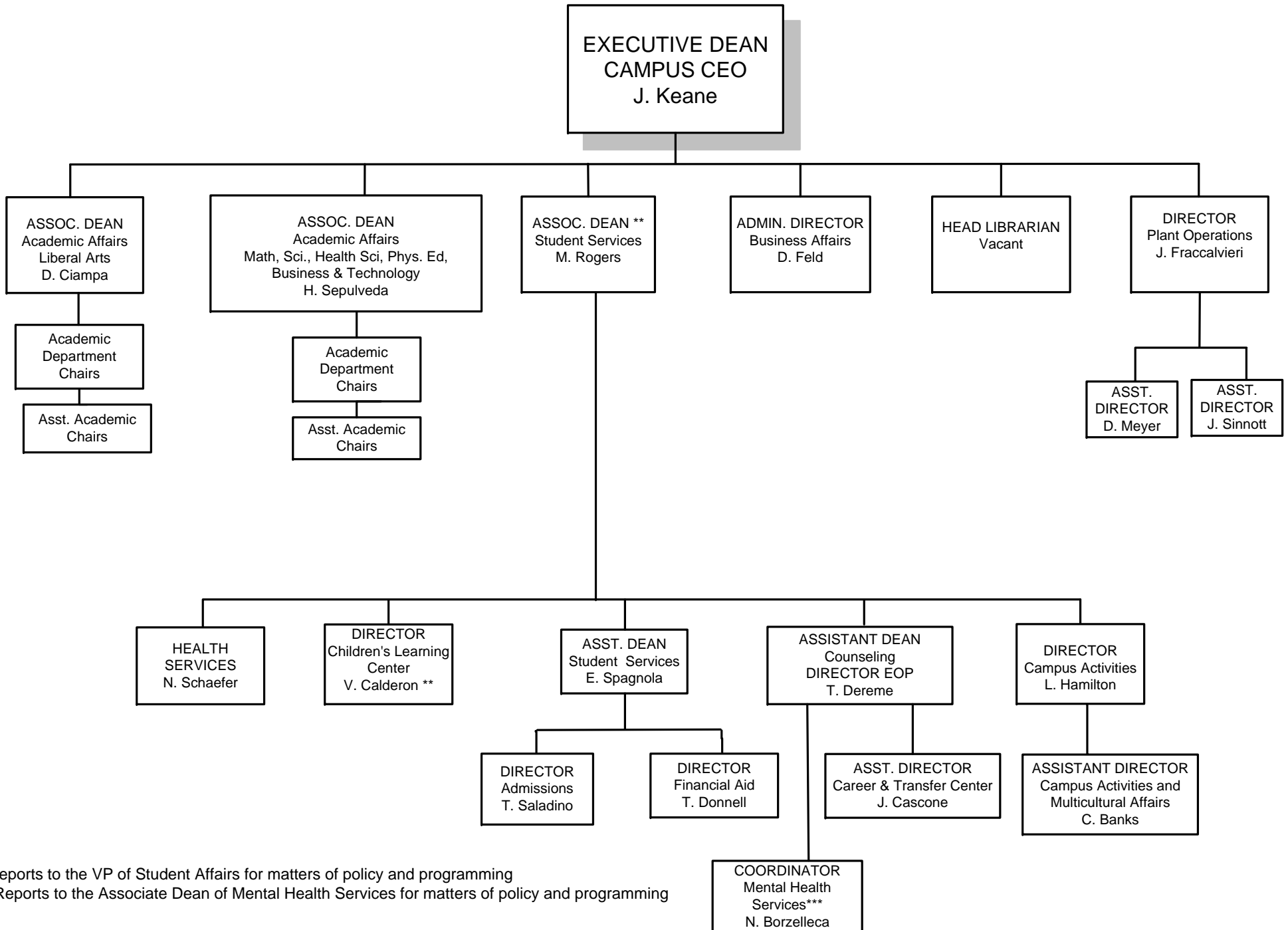


** Reports to the VP of Student Affairs for matters of policy and programming

*** Reports to the Associate Dean Mental Health Services for matters of policy and programming

Chart I

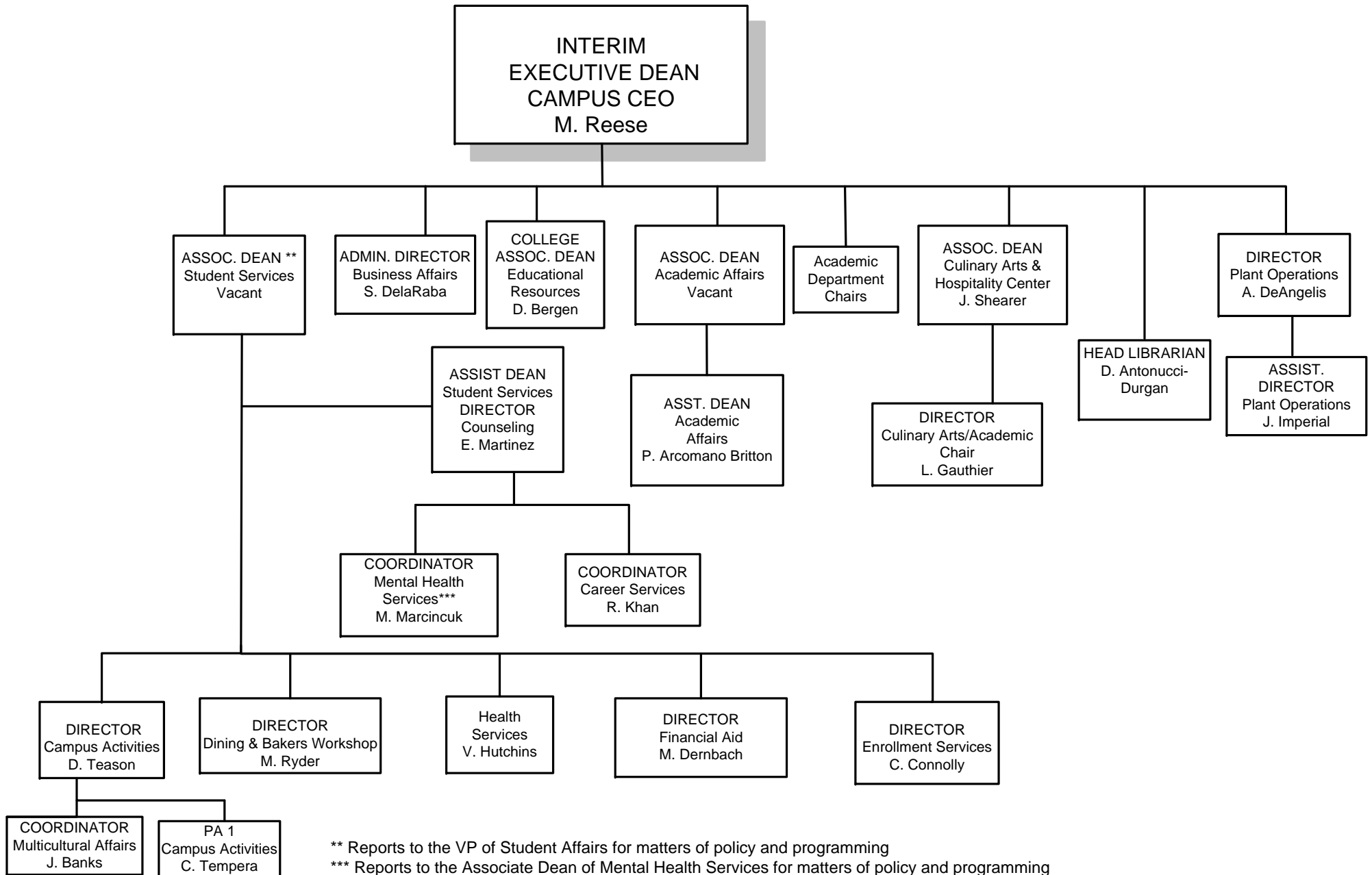
GRANT CAMPUS



** Reports to the VP of Student Affairs for matters of policy and programming
 *** Reports to the Associate Dean of Mental Health Services for matters of policy and programming

Chart J

EASTERN CAMPUS



** Reports to the VP of Student Affairs for matters of policy and programming
 *** Reports to the Associate Dean of Mental Health Services for matters of policy and programming